



**B R I T E F R A M E**  
**F A B R I C A T O R S**

CUSTOM SOLUTIONS FOR SILICONE EDGE GRAPHICS

---

**PRODUCT GUIDE**  
**Volume 2.4**

[www.briteframes.com](http://www.briteframes.com)  
[sales@briteframes.com](mailto:sales@briteframes.com)





# TEXTILE FRAMES

## SINGLE SIDED



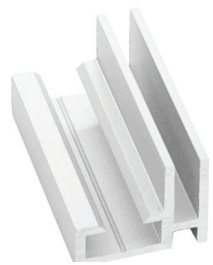
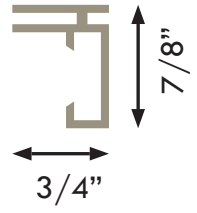
### SINGLE 19

- BF19S Silver
- BF19B Black
- BF19W White
- BF19HS Silver (punch holes)

Application: Wallmount, Suspended

Width: 0.75" (19mm)

Colors:



### SINGLE 25

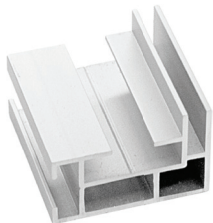
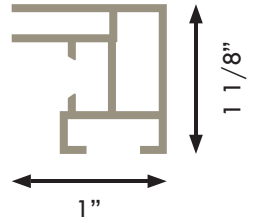
- BF25S Silver
- BF25B Black
- BF25W White

Application: Wallmount, Suspended

Width: 1" (25mm)

Option: Stabilizers for reinforcement

Color:



### STURDY 27

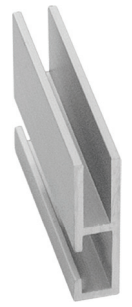
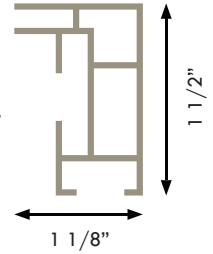
- BF27S Silver
- BF27B Black
- BF27W White

Application: Wallmount, Suspended

Width: 1.06" (27mm)

Option: Option: Stabilizers for reinforcement

Colors:



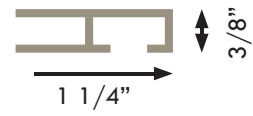
### CABINET 34

- BF34S Silver

Application: Build in

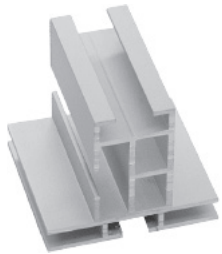
Width: 1.3" (34mm)

Colors:



# TEXTILE FRAMES

## DOUBLE SIDED



### DOUBLE 44

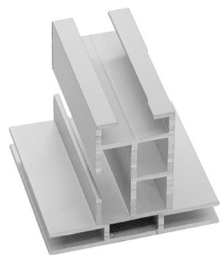
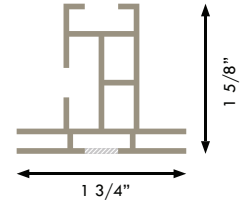
BF44S Silver  
BF44B Black  
BF44W White

Application: Freestanding, Suspended

Width: 1.75" (44mm)

Option: Stabilizers for reinforcement

Colors: 



### DOUBLE 44 CLOSED

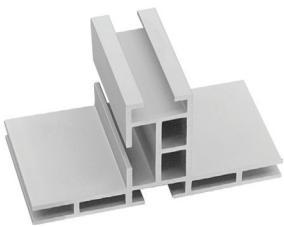
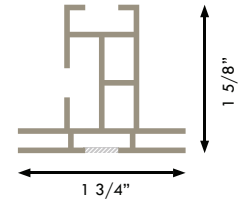
BF44S-C Silver  
BF44B-C Black  
BF44W-C White

Application: Freestanding, Suspended, Wallmount

Width: 1.75" (44mm)

Option: Stabilizers for reinforcement

Colors: 



### DOUBLE 80

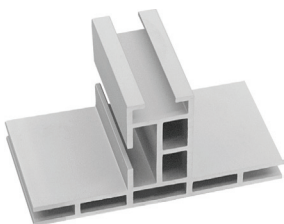
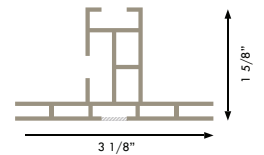
BF80S Silver  
BF80B Black

Application: Freestanding, Suspended

Width: 3.125" (80mm)

Option: Stabilizers for reinforcement

Colors: 



### DOUBLE 80 CLOSED

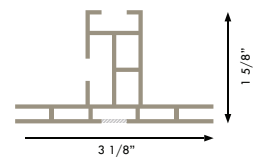
BF80S-C Silver

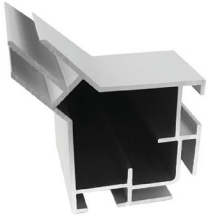
Application: Freestanding, Suspended

Width: 3.125" (80mm)

Option: Stabilizers for reinforcement

Color: 





### CONCEALED CORNER 44

BFCC44 Silver

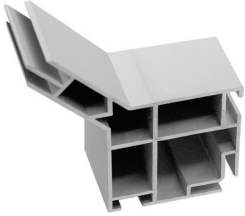
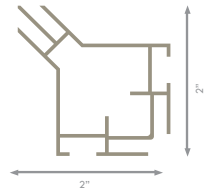
\*Use with BF44S or BF44S-C profile

Application: Freestanding, Suspended

Width: 1.7" (44mm)

Option: Stabilizers for reinforcement

Color: 



### CONCEALED CORNER 86

BFCC86 Silver

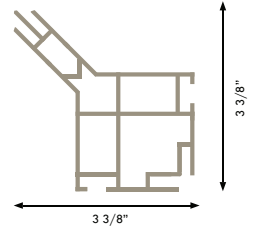
\*Use with BF80S or BF80S-C profile

Application: Freestanding, Suspended

Width: 3.4" (86mm)

Option: Stabilizers for reinforcement

Color: 



### CONCEALED CORNER 160

BFCC160 Silver

\*Use with BF160S or BF160B profile

Application: Freestanding, Suspended

Width: 6.3" (160mm)

Option: Stabilizers for reinforcement

Color: 



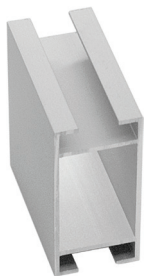
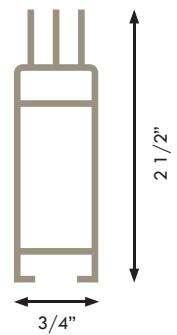
### CUBE 65

BF65S Silver

Application: Freestanding, Suspended

Width: 2.5" (65mm)

Color: 



### STABILIZER

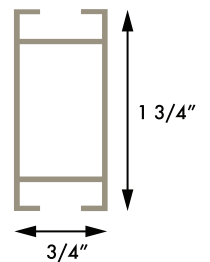
BFSTS Silver

BFSTW White

Application: Use in single, double

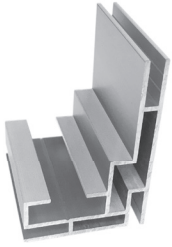
Width: 1.732" (30mm)

Colors:  




# LED FRAMES

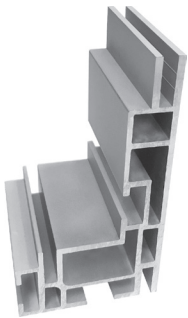
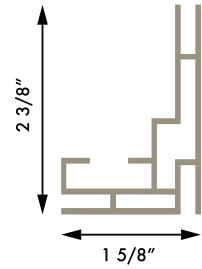
## SINGLE SIDED



### LIGHTBOX 60 SINGLE


BF60S Silver  
BF60B Black  
BF60W White

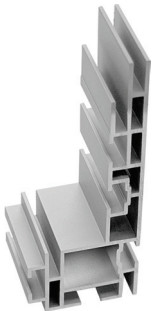
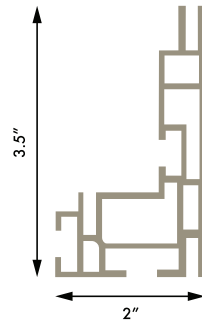
Application: Wallmount  
Width: 2.3" (60mm)  
Option: LED on dibond  
Colors: 



### LIGHTBOX 90 SINGLE


BF90S Silver  
BF90B Black

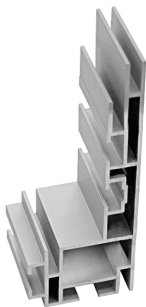
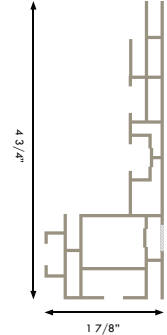
Application: Wallmount, Freestanding, Suspended  
Width: 3.5" (90mm)  
Option: LED on stabilizer  
Colors: 



### LIGHTBOX 120 SINGLE


BF120S Silver  
BF120B Black  
BF120W White

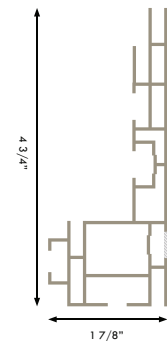
Application: Wallmount, Freestanding, Suspended  
Width: 4.75" (120mm)  
Option: LED on stabilizer  
Colors: 

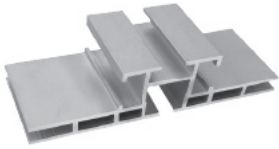


### LIGHTBOX 120 SINGLE CLOSED

BF120S-C Silver  
BF120W-C White

Application: Wallmount, Freestanding, Suspended  
Width: 4.75" (120mm)  
Option: LED on stabilizer  
Colors: 






### LIGHTBOX 100 DOUBLE

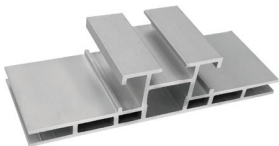
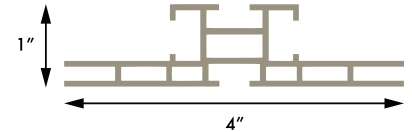
BF100S Silver  
BF100B Black

Application: Freestanding, Suspended

Width: 4" (100mm)

Option: LED on stabilizer

Colors:  




### LIGHTBOX 100 DOUBLE CLOSED

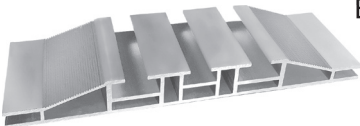
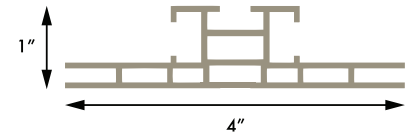
BF100S-C Silver

Application: Freestanding, Suspended

Width: 4" (100mm)

Option: LED on stabilizer

Colors: 



### LIGHTBOX 160 DOUBLE

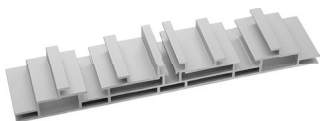
BF160S Silver  
BF160B Black

Application: Freestanding, Suspended

Width: 6.3" (160mm)

Option: LED on stabilizer

Colors:  



### LIGHTBOX 200 DOUBLE

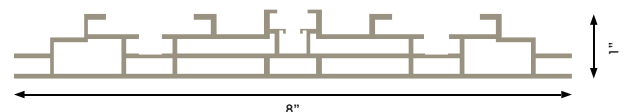
BF200S Silver  
BF200B Black  
BF200W White

Application: Freestanding, Suspended

Width: 8" (200mm)

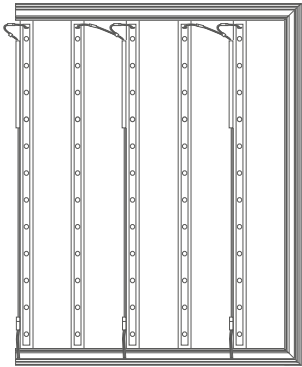
Option: LED on stabilizer

Colors:   



# LED FRAMES

---



## BRITE LED ON STABILIZER

BFSTS Silver

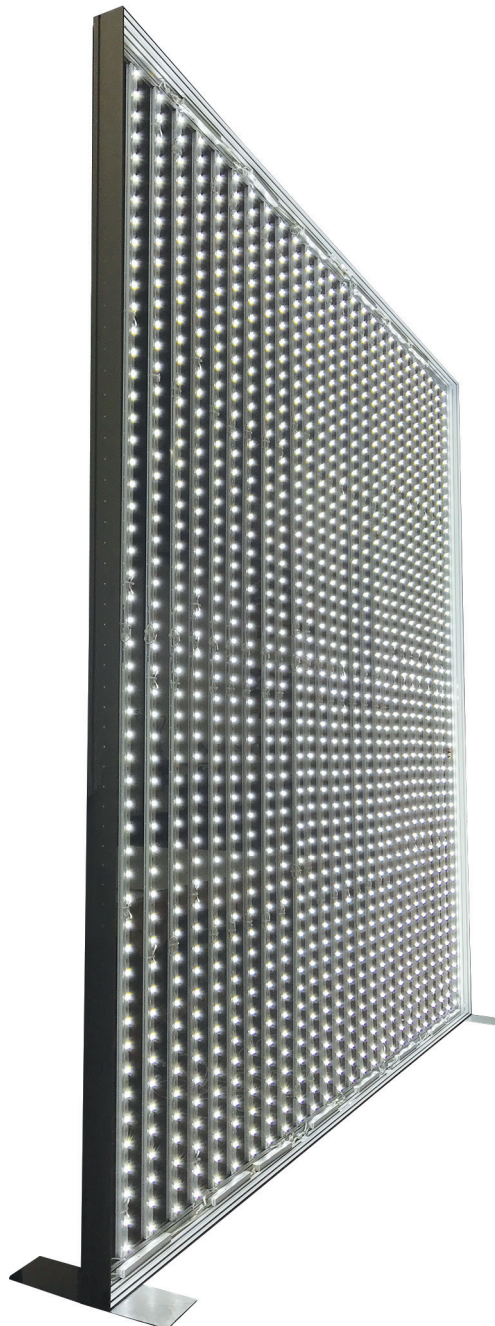
Application: Frame stabilizer, LED mountable

Width: 4.7" (120mm)

Option: LED mount

Color: 

◀ Stabilizers can be used with Lightbox 120 Single, 160 Double, and 200 Double.







## ULTRA LED

|       |       |                   |
|-------|-------|-------------------|
| BL327 | 5.9"  | 3 LEDs / 2.7w 24v |
| BL627 | 12.2" | 3 LEDs / 2.7w 24v |
| BL927 | 18.5" | 3 LEDs / 2.7w 24v |
| BL321 | 5.9"  | 3 LEDs / 2.1w 24v |
| BL621 | 12.2" | 3 LEDs / 2.1w 24v |
| BL921 | 18.5" | 3 LEDs / 2.1w 24v |

Lumens:  $\pm$  3100 per square yard

### Compatible Lightboxes:

- Lightbox 120 Single
- Lightbox 100 Double
- Lightbox 200 Double



## BRITE LED

|       |        |                     |
|-------|--------|---------------------|
| BL200 | 5.0"   | 2 LEDs / 1.44w 24v  |
| BL300 | 8.25"  | 3 LEDs / 2.88w 24v  |
| BL400 | 11.5"  | 4 LEDs / 2.88w 24v  |
| BL500 | 14.5"  | 5 LEDs / 4.32w 24v  |
| BL600 | 17.75" | 6 LEDs / 4.32w 24v  |
| BL700 | 36.6"  | 12 LEDs / 8.60w 24v |

Lumens: 7250 per square yard

### Compatible Lightboxes:

- Lightbox 50 Single
- Lightbox 120 Single
- Lightbox 100 Double Dibond



## POWER SUPPLY 60w

PS60 60 watts / 24v

Size: 9" x 1.2" x 0.8"

### Compatible Lightboxes:

- Lightbox 50 Single
- Lightbox 120 Single
- Lightbox 100 Double
- Lightbox 200 Double



## POWER SUPPLY 100w

PS100 100 watts / 24v

Size: 12" x 1.2" x 1"

### Compatible Lightboxes:

- Lightbox 50 Single
- Lightbox 120 Single
- Lightbox 100 Double
- Lightbox 200 Double



## LED DIMMER REMOTE

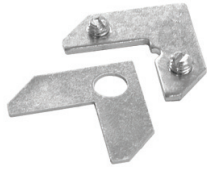
BLDIM Remote control dimmer

Size: 4.1" x 2.3" x 0.4"

**For use with all LED units**

# CORNER & EXTENSION HARDWARE

---



## SINGLE HARDWARE

BH0210 Silver  
Material: Steel

Application:  
Single 19  
Single 25

---



## STURDY HARDWARE

BH0200 Silver  
Material: Steel

Application:  
Sturdy 27  
Double 44  
Double 44 Closed  
Double 80  
Double 80 Closed  
Lightbox 50  
Lightbox 90  
Lightbox 120  
Lightbox 120 Closed

---

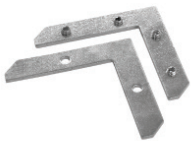


## STURDY SHORT

BH0205 Silver  
Material: Steel

Application:  
Sturdy 27  
Double 44  
Double 44 Closed  
Double 80  
Double 80 Closed  
Lightbox 50  
Lightbox 120  
Lightbox 120 Closed

---



## LIGHTBOX 100 DOUBLE DIBOND HARDWARE

BH0240 Silver  
Material: Steel

Application:  
Lightbox 100 Double Dibond

---



## LIGHTBOX 160 DOUBLE

BH1200 Silver  
Material: Steel

Application:  
Lightbox 160 Double

---



## LIGHTBOX 200 DOUBLE HARDWARE

BH0230 Silver  
Material: Steel

Application:  
Lightbox 200 Double

---



## LIGHTBOX 120 SINGLE HARDWARE

BH0250 Silver  
Material: Steel

Application:  
Lightbox 120  
Lightbox 120 Closed

---

# CORNER & EXTENSION HARDWARE



## CABINET HARDWARE

BH0260 Silver  
Material: Steel

Application:  
Cabinet 34

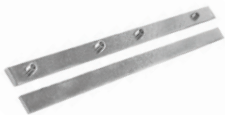


## FLEXIBLE HARDWARE

BH0430 Silver  
Material: Steel

Application:  
Sturdy 27  
Double 44  
Double 44 Closed  
Double 80

Double 80 Closed  
Lightbox 50  
Lightbox 90  
Lightbox 120  
Lightbox 120 Closed



## SINGLE PROFILE EXTENSION

BH0510 Silver  
Material: Steel

Application:  
Single 19  
Single 25



## STURDY PROFILE EXTENSION HARDWARE

BH0500 Silver  
Material: Steel

Application:  
Sturdy 27  
Double 44  
Double 44 Closed  
Double 80

Double 80 Closed  
Lightbox 50  
Lightbox 90  
Lightbox 120  
Lightbox 120 Closed



## LIGHTBOX 100 EXTENSION HARDWARE

BH0520 Silver  
Material: Steel

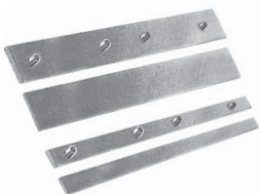
Application:  
Lightbox 100 Double



## LIGHTBOX 200 EXTENSION HARDWARE

BH0530 Silver  
Material: Steel

Application:  
Lightbox 200 Double



## LIGHTBOX 120 EXTENSION HARDWARE-

BH0550 Silver  
Material: Steel

Application:  
Lightbox 120 Single  
Lightbox 120 Single Closed

# CORNER & EXTENSION HARDWARE

---



## CONCEALED CORNER END CAP

BH0725 Silver

Material: Molded plastic

Application:  
Concealed Corner

---



## CONCEALED CORNER 44 END CAP

BHCC44EC Silver

Material: Molded plastic

Application:  
Concealed Corner 44

---



## CONCEALED CORNER HARDWARE

BH0280 Silver

Material: Steel

Application:  
Concealed Corner

---



## CUBE 65 CORNER CONNECTOR

BH0710 Silver

Material: Molded plastic

Application:  
Cube 65

---



## CUBE 65 EXTENSION CONNECTOR

BH0715 Silver

Material: Molded plastic

Application:  
Cube 65

---



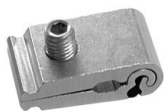
## CUBE STABILIZER HARDWARE

BH0270 Silver

Material: Steel

Application:  
Cube 65

---



## STABILIZER HARDWARE

BH0220 Silver

Material: Steel

Application:  
Stabilizer 44

---



## STABILIZER 45°

BH0222 Silver

Material: Steel

Application:  
Stabilizer 44

---



## BASEPLATE NARROW

BH0100 Silver

Application: Double 44, Double 80

Size: 15" x 2" x 0.4"

Material: Aluminum

Color: 



## BASEPLATE SLIM

BH0105 Silver

BH2105 Black

BH5605 White

Application: Double 44, Double 80,  
Lightbox 100 Double

Size: 15" x 3" x 0.1"

Material: Steel

Colors:   



## BASEPLATE HEAVY

BH0112 Silver

Application: Double 44, Double 80,  
Lightbox 100 Double

Size: 18" x 6" x 0.3"

Material: Steel

Colors: 



## BASEPLATE SIDE WIDE

BH0120 Silver

BH2120 Black

BH5620 White

Application: Double 44, Double 80, Lightbox 120

Size: 18" x 6" x 0.1"

Material: Steel

Colors:   



## BASEPLATE SIDE HEAVY

BH0174 Silver

Application: Double 44, Double 80, Lightbox 90,  
Lightbox 120

Size: 31.5" x 8" x 0.1"

Material: Steel

Colors:   

# BASEPLATES

---



## BASEPLATE 200

BH0140 Silver

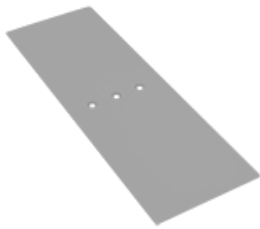
BH0140B Black

Application: Lightbox 200 Double

Size: 24" x 8" x 0.1"

Material: Steel

Colors:  



## BASEPLATE WIDE

BH0110 Silver

BH2110 Black

BH2510 White

Application: Double 44, Double 80,

Lightbox 100 Double

Size: 18" x 6" x 0.1"

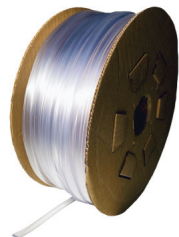
Material: Steel

Colors:   



**SAMPLE BOX**  
BH9990

Sample box contains all available profiles. Box converts into a table stand display.



**CLEAR KEDER**  
KTAP123C

Application:  
Sewing Keder for  
Silicone Edge Graphics



**GREEN KEDER**  
KTAP123W

Application:  
Sewing Keder for  
Silicone Edge Graphics



**ALU NUT**  
BH0300 Silver

Application:  
Double 44      Cube 65  
Double 44 Closed      Lightbox 120  
Double 80      Lightbox 120 Closed  
Double 80 Closed      Lightbox Double 100



**STEEL NUT**  
BH0520 Silver  
Material: Steel

Application:  
For mounting profiles  
and baseplates.

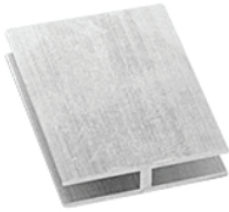


**STABILIZER**  
BFSTS Silver  
BFSTSW White

Application:  
Sturdy 27      Double 80 Closed  
Double 44      Lightbox 120  
Double 44 Closed      Lightbox 120 Closed  
Double 80      Lightbox Double 100  
Double 80      Lightbox Double 200

# OTHER

---



**DIBOND CONNECTOR**  
BFHCW Silver

Application:  
Lightbox 60

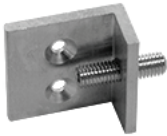
---



**BASEPLATE HARDWARE SIDE**  
BH0348 Silver

Application:  
Baseplate side

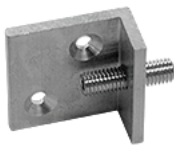
---



**WALLMOUNT SINGLE**  
BH0400 Silver  
Size: 1.2" x 1.2" x 0.6"

Application:  
Single 19  
Single 25

---



**WALLMOUNT STURDY**  
BH0410 Silver  
Size: 1.6" x 1.6" x 0.8"

Application:  
Single 19  
Sturdy 27  
Lightbox 90

---



**WALLMOUNT 120**  
BH0414 Silver  
Size: 1.6" x 1.6" x 1"

Application:  
Lightbox 120

---

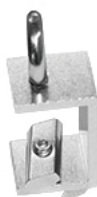




## WALLMOUNT BRACKET

BH0440 Silver  
Size: 7.8" x 2.7" x 2"

Application:  
Lightbox 100 Double



## CEILING MOUNT SINGLE

BH0420 Silver

Application:  
Single 25



## CEILING MOUNT DOUBLE

BH0360 Silver

Application:  
Double 44      Lightbox 120  
Double 80      Lightbox 100 Double  
Cube 65



## CEILING MOUNT STURDY

BH0361 Silver

Application:  
Sturdy 27      Lightbox 100  
Double 44      Lightbox 120  
Double 80      Lightbox 160  
Cube 65      Lightbox 200  
Lightbox 90



## FORGED CEILING MOUNT STURDY

BH0362 Silver

Application:  
Sturdy 27      Lightbox 100  
Double 44      Lightbox 120  
Double 80      Lightbox 160  
Cube 65      Lightbox 200  
Lightbox 90

# OTHER

---



## CEILING MOUNT STURDY

BH0425 Silver

Application:  
Sturdy 27

---



## CLEATHANGER

BHZ100

Application: Wall hanger  
Lightbox 60 (5' long)

---