

CUBE 65

3D textile LED frame

BF65S Silver

Colors:



Silver

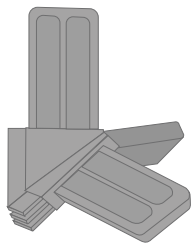
Available in every color on request.

Application: 3D
Width: 2.5 inches (65mm)
Length: Up to 20 feet



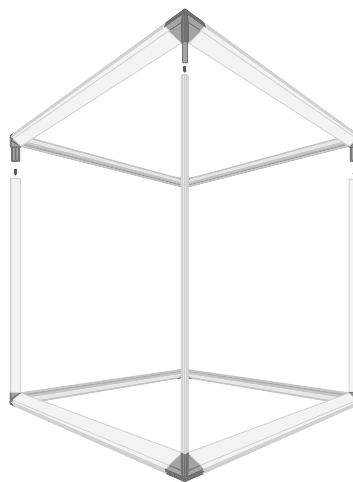
This unique profile creates a 3D cube that can be freestanding or suspended. Our plastic corner hardware makes end user assembly quick and easy. The cube textile frame can also be configured with an internal light for a dramatic lampshade effect. Perfect for retail spaces, showrooms and trade show exhibits.

- Straight Cut Profile
- Lightweight
- Easy Installation

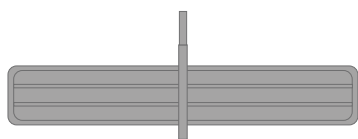


BH0710

Each frame is delivered with 8 Cube Connectors.

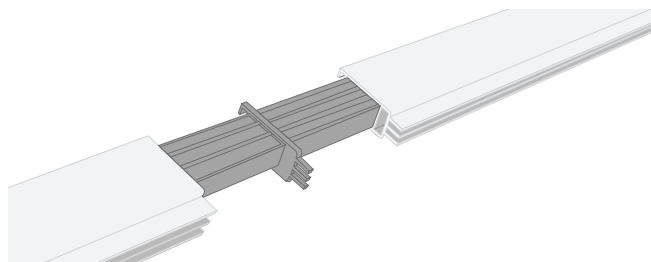


Optional



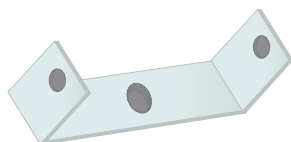
BH0715

If the length of the frame is longer than 4 meters, an extension set (BH0715) is included.



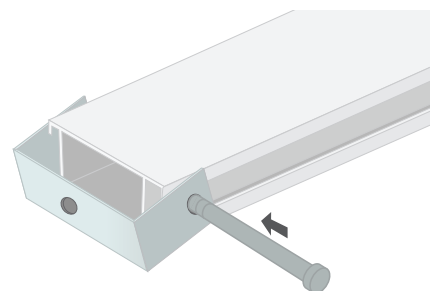
These extension sets can be placed in the channels where the frame is cut in half.

Optional



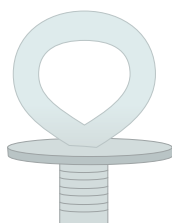
BH0270

When connecting the stabilizer, first place the lockset in the channel.



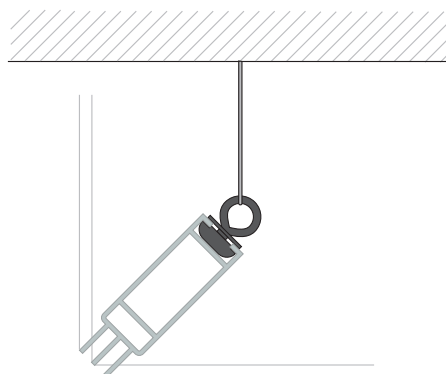
Then put the stabilizer (BF5TS) on the lockset

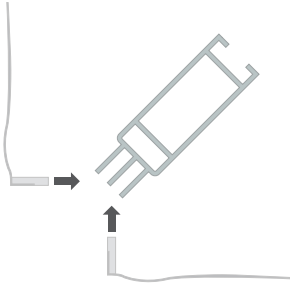
Optional



BH0360

Suspended from ceiling.





Place the textile print in the frame. Start with the corners and press the silicone strip in the channel.

