

# SINGLE 25

Wallmount textile frame

BF25S Silver

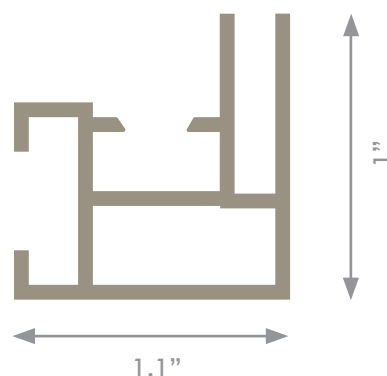
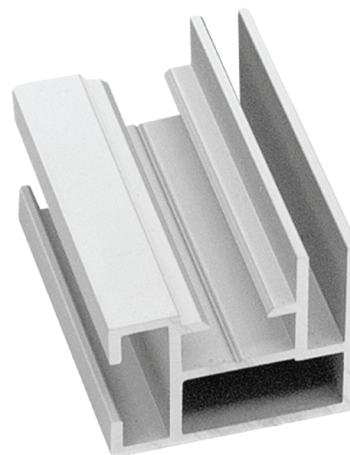
## Colors:



Silver

Available in every color on request.

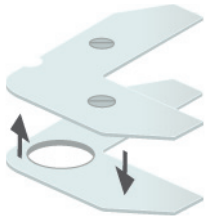
Application	- Wallmount
Width	- 1 inch (25mm)
Length	- Up to 20 feet
Option	- Sound absorbing felt



Typically used in home decoration, retail and office interiors, this single-sided profile is an ideal, versatile solution for larger wall mounted and suspended SEG frame projects.

Single 25 is available in custom colors.

- Best for larger single sided frames.
- Use extension hardware for frames greater than 10 feet.
- Profile accepts stabilizers for oversize frames.
- Wall mount brackets have threaded screws for precise leveling adjustment.
- Hanging mount available.



#### BH0210

Each frame is delivered with 8 locksets simple.



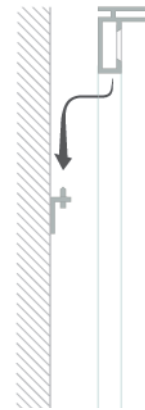
When connecting the frame, first place the lockset (BH0210) without the punchholes, then the one with punchholes.

#### Optional

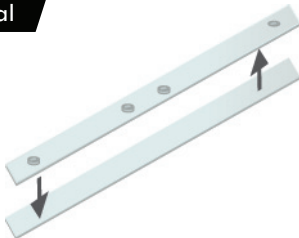


#### BH0400 / BH0410

These wallmounts can be placed under the frame to hang the frame on the wall.

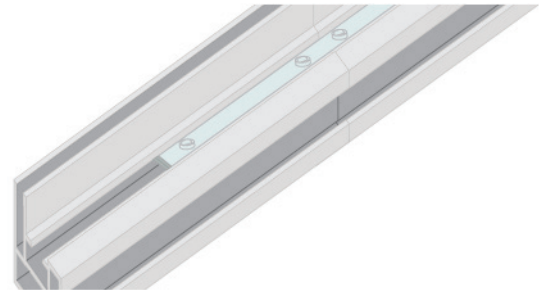


#### Optional



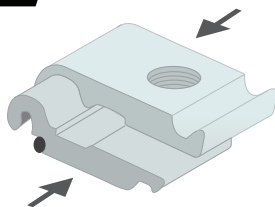
#### BH0510

If the length of the frame is longer than 13 feet, an extension set (BH0510) is included.



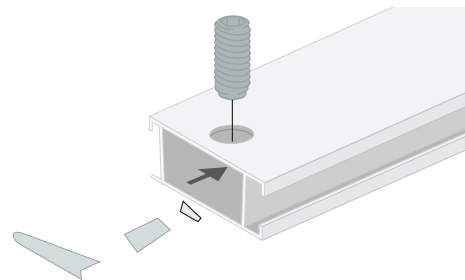
These extension sets can be placed in the channels where the frame is cut in half.

#### Optional



#### BH0220

When connecting the stabilizer, first place the lockset in the channel.



Then put the stabilizer (BFSTS) on the lockset, now tighten the screw with the delivered allen key.



Place the textile print in the frame. Start with the corners and press the silicone strip in the channel.

